



Join Us Now!

Phone: (715)-688-4088

Email:

[peacechildcare20@gmail.com](mailto:peacechildcare20@gmail.com)



PEACE CHILD CARE

## Our Program

Passionate teachers who love to work with children, and help them grow.

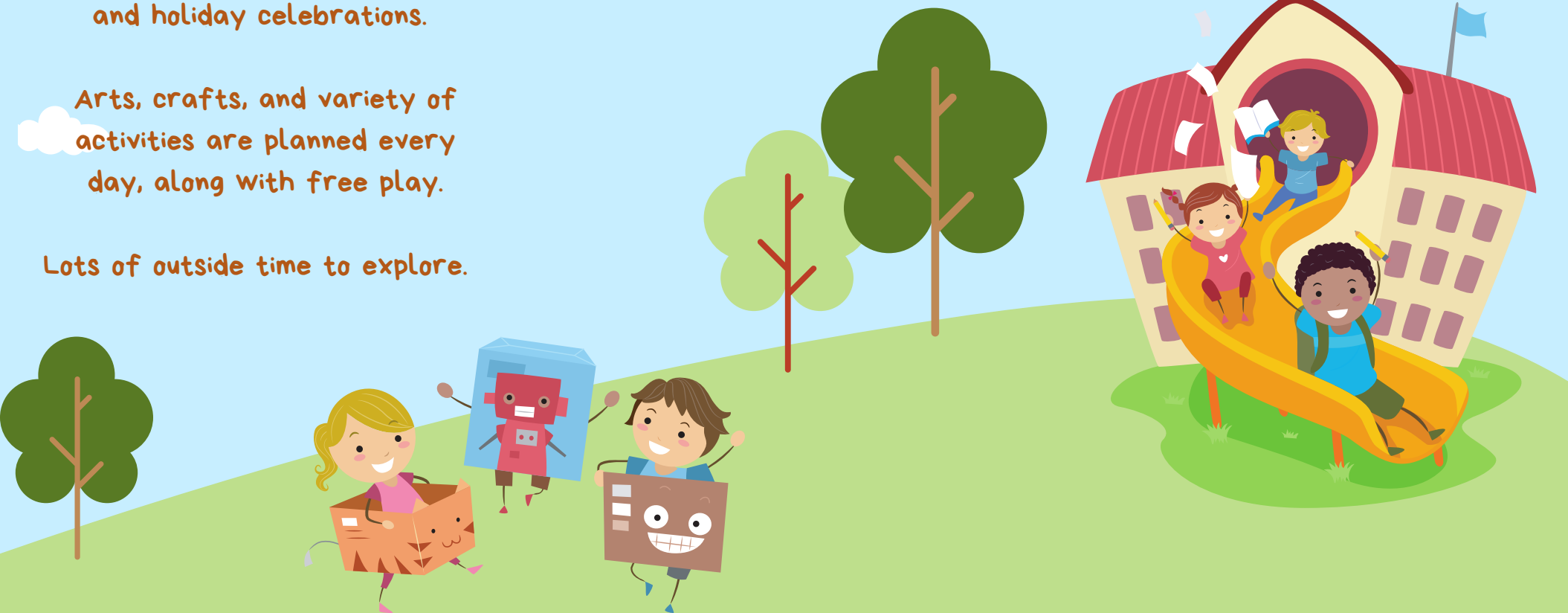
Weekly bible themes, diversity, and holiday celebrations.

Arts, crafts, and variety of activities are planned every day, along with free play.

Lots of outside time to explore.

Located: Peace Lutheran Church  
2084 County Road N  
Baldwin, WI 54002

" The Best Place For Your Children "



## About Us

- Breakfast and snack are included in the tuition costs.
- Transportation to and from 4k within Baldwin/Woodville school district.
- Transportation before and after school within Baldwin/Woodville school district.
- Children do need to be potty trained. The center understands that accidents do happen.



## Our Vision

The mission of Peace Child Care is to provide a fun and educational program for children in a fun and Christ-centered environment. Peace Child Care seeks to nurture and stimulate the growth of children in five areas of childhood development.

- Before & After School Care
- Full Time Care
- Part Time Care



## Five Areas Of Development

**Spiritually:** foster the development of Christian values by experiencing God's love through Bible stories, prayer and music

**Socially:** facilitate a non-competitive, fun-filled atmosphere. Enhance the development of age-appropriate relationships characterized by caring, sharing, and trust.

**Physically:** promote healthy eating and exercise habits.

**Emotionally:** encourage a positive self-image, recognition of feelings, and the learning of self-control.

**Intellectually:** stimulate growth and critical thinking in all age-relevant academic subjects, and development tasks.